

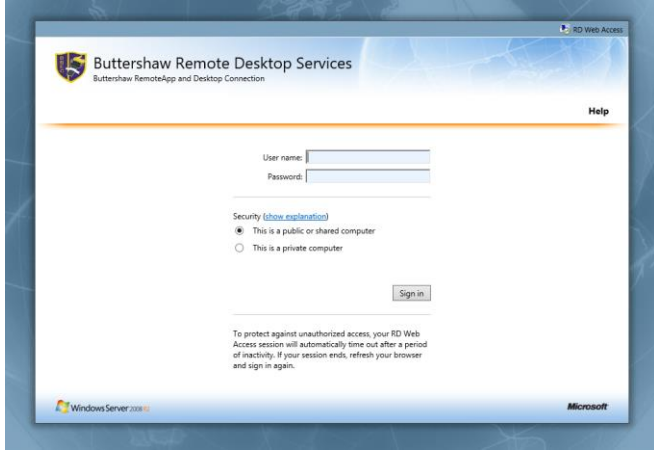
# How to Login to Remote Web Access

1. Open Internet Explorer and enter the web address for the school's remote access web page.

Note: The remote web access only works with Internet Explorer.

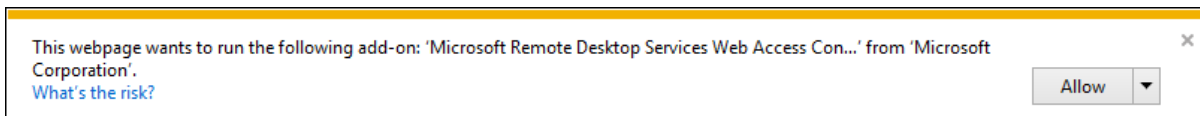
This is <https://remote.buttershaw.net>

You should see a webpage similar to the screenshot below.



2. The first time you connect, you may receive a prompt to run the following add-on: "Microsoft Remote Desktop Services Web Access Con..." from Microsoft Corporation.

Click **Allow**



3. Enter your **User Name** that you use at school.

So if your username is 123456, you will enter 123456 - as shown in the example above.

Enter your **Password**. This is your normal password that you use at school.

If you are using a shared computer, check the radio button beside **This is a public or shared computer**

If you are using a private computer that is not shared then you can check the radio button beside **This is a private computer**

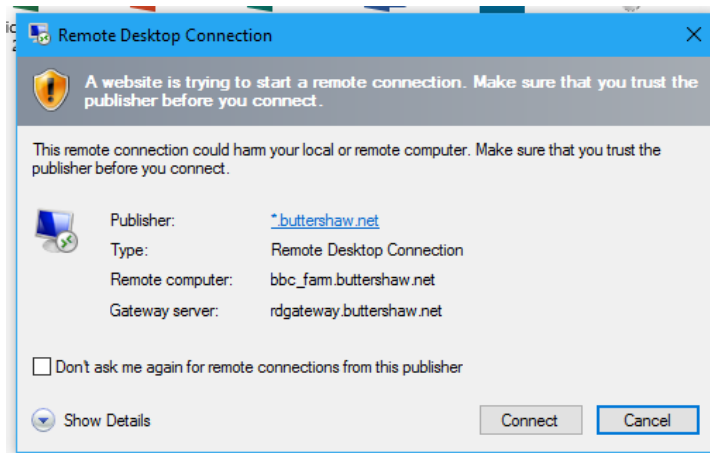
Click **Sign in**

4. Click on the shortcut of the program you want to start

Choose Remote Desktop to access the full school desktop, all programs, your files and the network drives.



5. Click Connect. Your program will then start.



If you are using a private computer (i.e. you checked the radio button beside "This is a private computer" when logging in) then you will have the option to tick a box beside **Don't ask me again for remote connections from this publisher.**

This will stop the prompt appearing in future when starting programs.

Last updated : 26/06/2019.