

Treble Clef Notes

E G B D F F A C E

D ^b	E ^b	G ^b	A ^b	B ^b	D ^b	E ^b	G ^b	A ^b	B ^b				
C [#]	D [#]	F [#]	G [#]	A [#]	C [#]	D [#]	F [#]	G [#]	A [#]				
C	D	E	F	G	A	B	C	D	E	F	G	A	B

Notes On Lines **Notes In Spaces**

G B D F A A C E G

Melody - the main tune

Ascending



Going up in pitch.

Descending



Going down in pitch.

Range



The difference between the highest and lowest note - wide or narrow

Conjunct



Moves up or down by step.

Disjunct



Moves in big leaps.

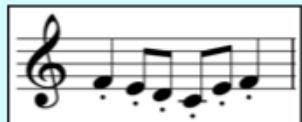
Articulation - how the notes are played

Legato



Smooth and flowing.

Staccato



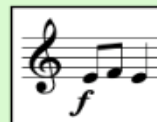
Detached, spiky.

Piano



Quiet

Forte



Loud

Diminuendo



Getting quieter

Crescendo



Getting louder

Dynamics - how loud or soft the music is played

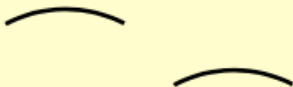
Texture - the layers of sound and how they fit together

Unison



All doing the same thing at the same time

Imitation



When one part copies another

Monophonic



A single voice or instrument

Polyphonic



Different parts that interweave together

Melody and Accompaniment



A main melody with all other parts in the background

Structure - the sections and how they are ordered

Common Chords and Drum Rhythms

Intro	Contrasting section	Repeated section	Coda
The beginning section	A section that has new ideas in it	A section where you hear the same music again	The end section

C – CEG
 Dm – DFA
 Em – EGB
 F - FAC
 G - GBD
 Am - ACE

Major
 Minor
 Sus 4
 7th
 9th

R R R R
 L L
 RF RF

 R R R R
 L
 RF

Instrumentation - the instruments used

Orchestra



Strings, brass, woodwind and percussion instruments

Rock Band



Vocals, electric guitar, bass guitar, drum kit

Vocal



Male and/or female singer

String



Violin, viola, cello, double bass

Brass



Trumpet, french horn, trombone, tuba

Woodwind



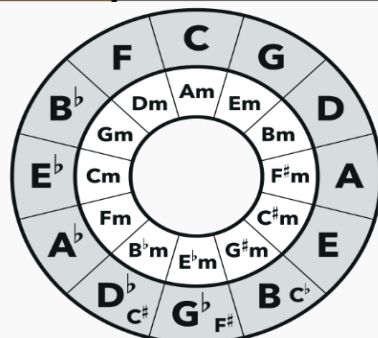
Flute, oboe, clarinet, bassoon, saxophone

Percussion

Timpani
 Snare Drum
 Cymbal
 Tambourine
 Triangle
 Bass Drum

Scale and Keys

Number	Name	Roman	Solfege
1	Tonic	I	Do
2	Supertonic	ii	Re
3	Mediant	iii	Mi
4	Subdominant	IV	Fa
5	Dominant	V	So
6	Submediant	vi	La
7	Leading Tone	vii	Ti



Tempo - the speed of the music

Presto



Very quick

Allegro



Quick

Andante



Walking pace

Adagio



Leisurely

Largo



Slow and stately